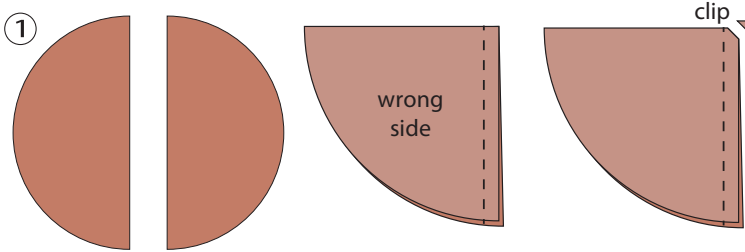




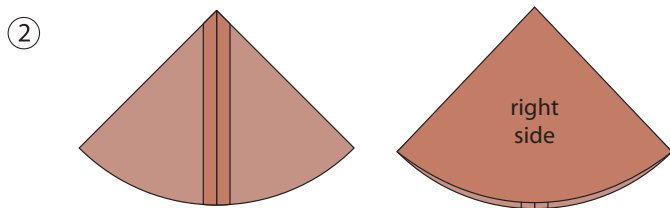
Poinsettia

This eighteen-petaled fabric flower is easy to make. Use as a Christmas ornament, a holiday pin, or present topper.

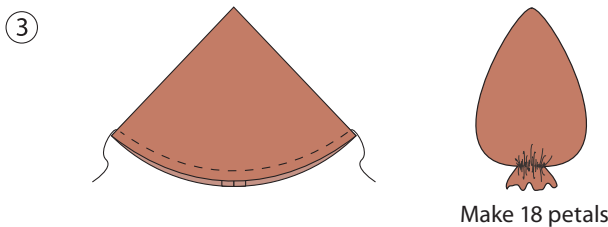
- Supplies: 2 fat quarters for flowers
 1 fat quarter for leaves
 2¼" circle of felt for backing
 Perle Cotton 12 for flower center
 Option: seed beads for tips of petals and flower center
 Option: Pin Back or ribbon for hanger



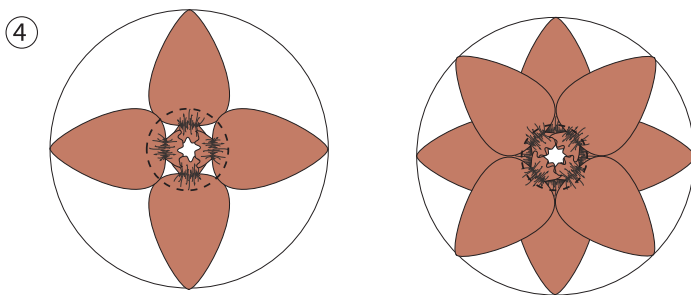
1. Cut nine 3¼" circles from complementary colors, (red, pink or white) for the flower petals. Cut each circle in half to make 18 half circles. Each half circle will be one petal.
 Fold a half circle in half, right sides together, matching straight edges. Sew the raw straight edges together with a ¼" seam allowance. Diagonally clip the seam allowance at the top fold as illustrated.



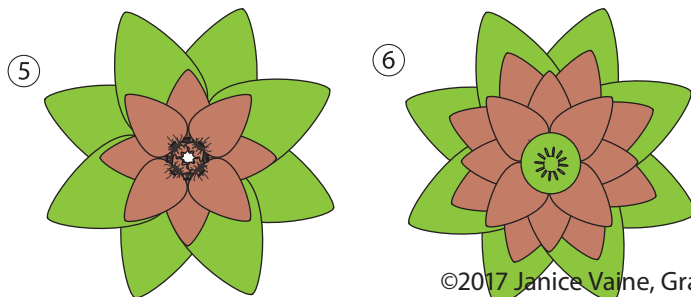
2. Finger press the seam allowance open and turn the petal right side out, centering the seam on the back.
3. Join the two bottom edges together with a running stitch. Pull to gather and secure. Make 18 petals.



4. Trace a 3" circle on a 4" x 4" piece of crinoline. Position four petals north, south, east and west, with the tip of each petal on the outer edge of the traced circle. Pin in place. Sew the petals in place along the bottom edge of each petal.
 Place four petals diagonally between the four secured petals. Sew in place along the bottom edge of each petal.



5. Cut four 4-½" circles from green. Cut each circle in half. Make eight petals for leaves following steps 1-3 above. Position leaves in a circle behind flower petals and pin. Secure to crinoline.



6. Position 8 to 9 flower petals between the first eight-petaled flower and the leaves. Pin and sew in place. Cut an 1¾" circle for flower center. Stitch a running stitch ⅛" from cut outside edge. Gather into a circle. Appliqué gathered circle to the center of the flower. Add Drizzle Stitches (see attached) to center circle. Trim crinoline from back. Appliqué the 2¼" felt circle to the back of the flower.

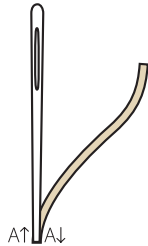
- Options:
- Add a seed bead to the tip of each flower and leaf petal.
 - Add a pin back to the back of the Poinsettia.
 - Add ribbon to the back for an ornament hanger.
 - Use as a present topper.



Drizzle Stitch

This is a Brazilian embroidery stitch. It is best to work this stitch with a Milliners needle.

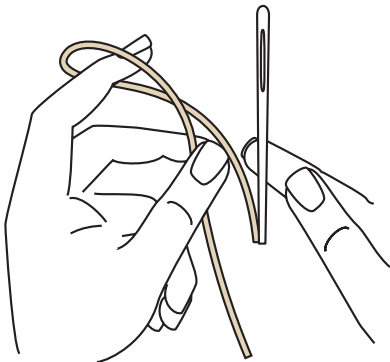
①



1. Bring the needle and thread to the front at A. From the right side, take the tip of the needle partially back down into the fabric close to A. Unthread the needle.

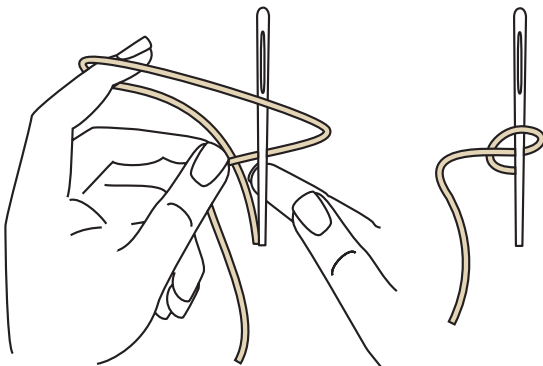
Tip: Stick the needle into a pincushion underneath the fabric while you add cast-on stitches.

②



2. Hold the needle with your right hand; with your left hand, bring the working thread around your index finger, forming a loop.

③

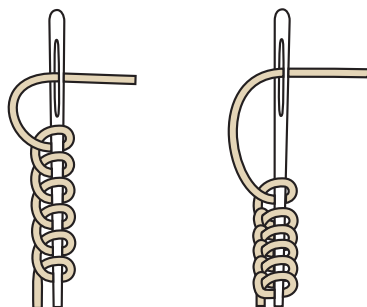


3. Place the loop on the needle. Remove your index finger, and pull the loop tight on the needle.

4. Work as many cast-on stitches as desired. (*Note:* I used 12 cast-on stitches and Perle Cotton #12 in the center of the Poinsettia.) Rethread the needle.

Holding the cast-on stitches, begin to pull the rethreaded needle through the cast-on stitches and to the back. Secure.

④



Tip: Before rethreading the needle, add a seed bead to the thread. Then rethread the working thread into the eye of the needle and pull through the cast-on stitches.

Poinsettia Templates

1 ³/₄"
Flower Center

3 ¹/₄"
Flower Petals



4 ¹/₂"
Leaf Petals

2 ¹/₄"
Felt Back